



# Harper-Archer Elementary School

## Preparing for Budget Development



GO Team Meeting #4

Tuesday, December 12, 2023, 5:00 PM

Dr. Crystal January, Principal

# Agenda

Fall to Winter MAP Data Discussion

Review of Strategic Plan and priorities progress

*Strategic Plan Updates*

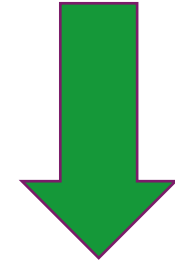
Preparing for the Budget Development

*Rank Strategic Priorities*



# Timeline for GO Teams

You are **HERE**



1

## **Fall 2021**

GO Team Developed 2021-2025 Strategic Plan

2

## **Summer 2023**

School Leadership completed Needs Assessment and defined overarching needs for SY23-24

3

## **August 2023**

School Leadership completed 2023-2024 Continuous Improvement Plan

4

## **Sept. - Dec. 2023**

Utilizing current data, the **GO Team** will review & possibly update the school strategic priorities and plan

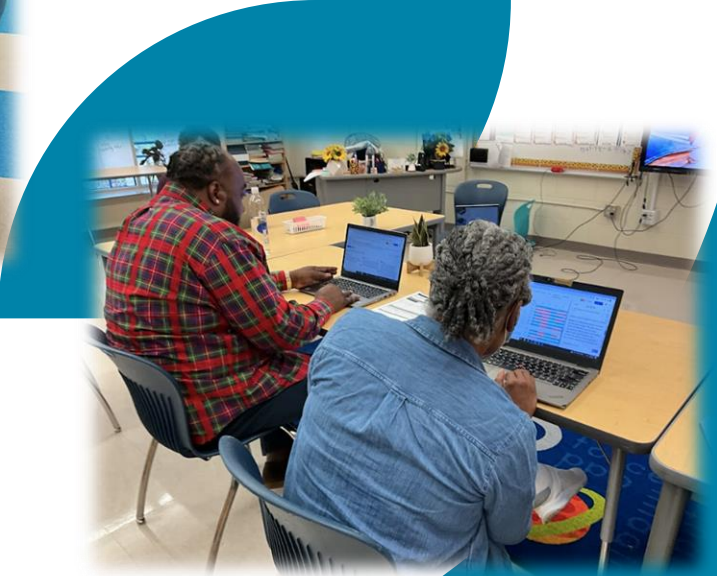
5

## **Before Winter Break**

**GO Team** will take action (vote) on the school's strategic plan and vote on the ranked strategic plan priorities for SY24-25 budget discussions.



# Data Discussion



# WINTER MAP RESULTS

## MAP Growth Achievement Level Predictions by School

Georgia Milestones Achievement Level Predictions are only made for Grades 2-8

(\*Reading tests taken in Spanish are not given a GAMAS Achievement Level)

\*click in a school or district row to see grade level performance if there are above 10 students per grade\*

Data updates  
nightly  
during test  
window.



School	Window	Exams				
DISTRICT	Winter 2023-2024	35,714	37%	31%	21%	10%

School	Window	Exams				
Boyd	Winter 2023-2024	522	47%	35%	15%	
Scott	Winter 2023-2024	381	46%	39%	13%	
Usher-Collier	Winter 2023-2024	478	46%	38%	14%	
FL Stanton	Winter 2023-2024	230	53%	34%	10%	
Harper-Archer ES	Winter 2023-2024	658	53%	38%	8%	
Invictus	Winter 2023-2024	1,356	66%	27%	7%	

School	Window	Exams				
DISTRICT	Fall 2023-2024	35,893	36%	32%	22%	10%
	Winter 2023-2024	35,714	37%	31%	21%	10%

School	Window	Exams				
Harper-Archer ES	Fall 2023-2024	648	58%	34%	7%	
	Winter 2023-2024	658	53%	38%	8%	

# WINTER MAP RESULTS: READING

## MAP Growth Achievement Level Predictions by School

Georgia Milestones Achievement Level Predictions are only made for Grades 2-8

(\*Reading tests taken in Spanish are not given a GAMAS Achievement Level)

\*click in a school or district row to see grade level performance if there are above 10 students per grade\*

Data updates  
nightly  
during test  
window.



School	Window	Exams	Achievement Level Predictions			
DISTRICT	Winter 2023-2024	17,888	38%	28%	22%	12%

School	Window	Exams	Achievement Level Predictions			
Boyd	Winter 2023-2024	261	52%	28%	16%	4%
Usher-Collier	Winter 2023-2024	240	48%	33%	18%	
FL Stanton	Winter 2023-2024	122	57%	25%	15%	
Scott	Winter 2023-2024	191	48%	35%	14%	
Harper-Archer ES	Winter 2023-2024	329	57%	32%	9%	
Invictus	Winter 2023-2024	679	67%	24%	9%	

School	Window	Exams	Achievement Level Predictions			
Harper-Archer ES	Winter 2023-2024	329	57%	32%	9%	

School	Grade	Window	Exams	Achievement Level Predictions			
Harper-Archer ES	02	Winter 2023-2024	88	59%	31%	9%	
	03	Winter 2023-2024	82	57%	30%	7%	
	04	Winter 2023-2024	73	64%	32%		
	05	Winter 2023-2024	86	48%	35%	16%	



# WINTER MAP RESULTS: READING

School	Window	Exams	Performance Breakdown			
DISTRICT	Fall 2023-2024	17,976	37%	28%	23%	12%
	Winter 2023-2024	17,888	38%	28%	22%	12%

School	Window	Exams	Performance Breakdown			
Harper-Archer ES	Fall 2023-2024	324	61%	28%	9%	
	Winter 2023-2024	329	57%	32%	9%	

## GROWTH



School	Growth Timeframe	Grade	Exams	Performance Breakdown	
Harper-Archer ES	Fall to Winter (same school year)	KK	64	47%	50%
		01	80	49%	10% 41%
		02	78	64%	35%
		03	77	52%	6% 42%
		04	69	48%	7% 45%
		05	80	38%	59%

## FLUENCY



# WINTER MAP MATH RESULTS

## MAP Growth Achievement Level Predictions by School

Georgia Milestones Achievement Level Predictions are only made for Grades 2-8  
 (\*Reading tests taken in Spanish are not given a GAMAS Achievement Level)

\*click in a school or district row to see grade level performance if there are above 10 students per grade\*

Data updates  
 nightly  
 during test  
 window.



School	Window	Exams				
DISTRICT	Fall 2023-2024	17,917	35%	37%	20%	9%
	Winter 2023-2024	17,826	36%	35%	20%	8%

School	Window	Exams			
Harper-Archer ES	Fall 2023-2024	324	54%	40%	6%
	Winter 2023-2024	329	50%	43%	6%

School	Window	Exams			
Boyd	Winter 2023-2024	261	43%	43%	13%
Scott	Winter 2023-2024	190	44%	43%	12%
Usher-Collier	Winter 2023-2024	238	45%	44%	11%
Harper-Archer ES	Winter 2023-2024	329	50%	43%	6%
FL Stanton	Winter 2023-2024	108	50%	44%	5%
Invictus	Winter 2023-2024	677	66%	29%	4%



# WINTER MAP RESULTS: MATH

School	Window	Exams	Performance		
Harper-Archer ES	Winter 2023-2024	329	50%	43%	6%

School	Grade	Window	Exams	Performance		
Harper-Archer ES	02	Winter 2023-2024	88	40%	55%	6%
	03	Winter 2023-2024	82	48%	41%	10%
	04	Winter 2023-2024	73	59%	37%	
	05	Winter 2023-2024	86	55%	40%	

Harper-Archer ES	Fall to Winter (same school year)	452	43%	8%	49%
------------------	-----------------------------------	-----	-----	----	-----

School	Filter	Growth Timeframe	Grade	Exams	Performance		
Harper-Archer ES	☰	Fall to Winter (same school year)	KK	64	41%	5%	55%
			01	80	43%	6%	51%
			02	82	48%	9%	44%
			03	77	47%	9%	44%
			04	69	46%	10%	43%
			05	80	33%	10%	58%

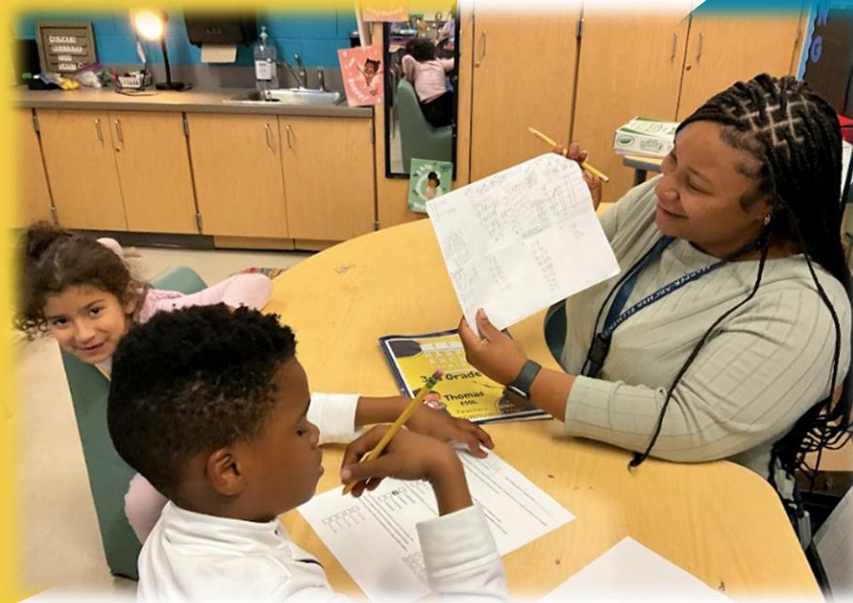


# GO Team Discussion: Data Protocol

- What do you notice?
- What are your wonderings?
- What additional questions do you have?



# Strategic Plan Updates



# Strategic Plan 2021-2025

**Mission:** Lovingly preparing all scholars to blaze a path towards their college and career choice



**Vision:** To become a high-achieving, supportive, thriving and equitable community of college and career ready scholars, expert educators, and engaged parents and partners

**SMART Goals**

Increase the % of grades 3-5 students scoring proficient or above in reading

Increase the % of grades 3-5 students scoring proficient or above in math

Increase the % of grades 3-5 students being present at least 90% of days enrolled



**APS Strategic Priorities & Initiatives**

**Fostering Academic Excellence for All**  
Data  
Curriculum & Instruction  
Signature Program

**Building a Culture of Student Support**  
Whole Child & Intervention  
Personalized Learning

**Equipping & Empowering Leaders & Staff**  
Strategic Staff Support  
Equitable Resource Allocation

**Creating a System of School Support**  
Collective Action, Engagement  
& Empowerment

**School Strategic Priorities**

1. Cultivate a school – wide literate and numerate community in which scholars read, write, speak, and think with clarity, confidence, and fluency across the curriculum
2. Strengthen teaching and learning experiences

1. Advance comprehensive wrap around services

1. Provide equitable access to high quality teacher and leader development
2. Enable strategic staffing support.

1. Invest deeply in and foster adult wellness

**School Strategies**

1. Implement high quality, rigorous, and culturally relevant and linguistically responsive curriculum with fidelity in all core content areas and instructional best practices in Tier 1 Instruction
2. Utilize flexible learning tools, technology integration, and targeted instruction to personalize learning for all students
3. Utilize data to drive all instructional decisions and ensure equitable outcomes for all students.
4. Strengthen the implementation of signature programming across all schools
5. Implement a Whole-Child system of supports that integrates social-emotional learning, behavior, wellness, and comprehensive academic intervention plans
6. Build additional time and support for struggling learners
7. Strengthen the content, planning, and implementation of instructional training, support and coaching
8. Provide equitable opportunities for differentiated professional learning
9. Create and ensure staff has adequate time to utilize a staff wellness room
10. Provide additional planning and preparation time for instructional staff
11. Partner with families and the community to address the needs of all students



# Updates to the Strategic Plan

1. *Enter all changes/updates to your plan – be sure to include accountability measures, as appropriate.*

# Action on the Updated Strategic Plan

The GO Team needs to **TAKE ACTION (vote)** on its updated Strategic Plan. After the motion and a second, the GO Team may have additional discussion. Once discussion is concluded, the GO Team will vote.

# Preparing for Budget Development



# Discussion

## Strategic Plan Priority Ranking

In preparation for the 2024-2025 Budget Development (January–March 2024), the GO Team needs to rank its Strategic Plan Priorities. Use the next slide to capture the priority ranking.

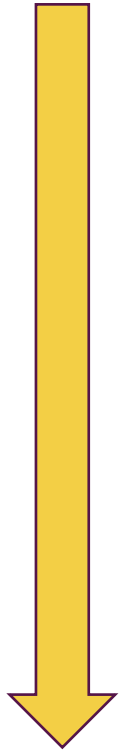




# Strategic Plan Priority Ranking

Last year's ranking

Higher



Lower

1. Cultivate a school – wide literate community in which scholars read, write, speak, and think with clarity, confidence, and fluency across the curriculum
2. Strengthen teaching and learning experiences
3. Advance comprehensive wrap around services
4. Provide equitable access to high quality teacher and leader development
5. Enable strategic staffing support.
6. Invest deeply in and foster adult wellness

# Strategic Plan Priority Ranking

Insert the school's priorities from Higher to Lower

Higher



Lower

1.



# Action on the Strategic Plan Priorities

The GO Team needs to **TAKE ACTION (vote)** on its ranked Strategic Plan Priorities. After the motion and a second, the GO Team may have additional discussion. Once discussion is concluded, the GO Team will vote.

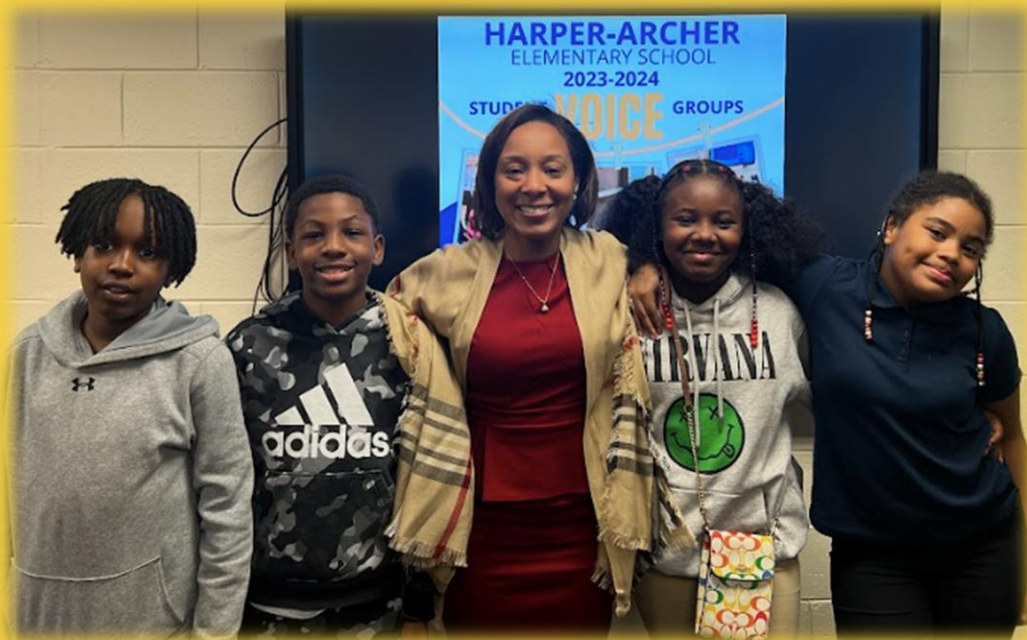
# Where we're going

At our next meeting we will begin the discussion of the 2024-2025 budget.

Let me or the Chair know of any additional information you need for our future discussion.



# Principal's Report



# HAES UPDATES

CELEBRATIONS

Deloitte –  
Financial  
Literacy

Leading  
Fellows

PBIS Skate  
Party

Mercedes-Benz  
Stadium

Day of Dance

Morehouse  
Tutoring

Reading is a  
Gift



# HAES UPDATES

Formal CIT  
November 27,  
2023

REAP – Reading is  
Essential for ALL  
People

UVA – Partnership  
for Leaders in  
Education

Leverage  
Leadership –  
Practice Clinics

Corwin Literacy

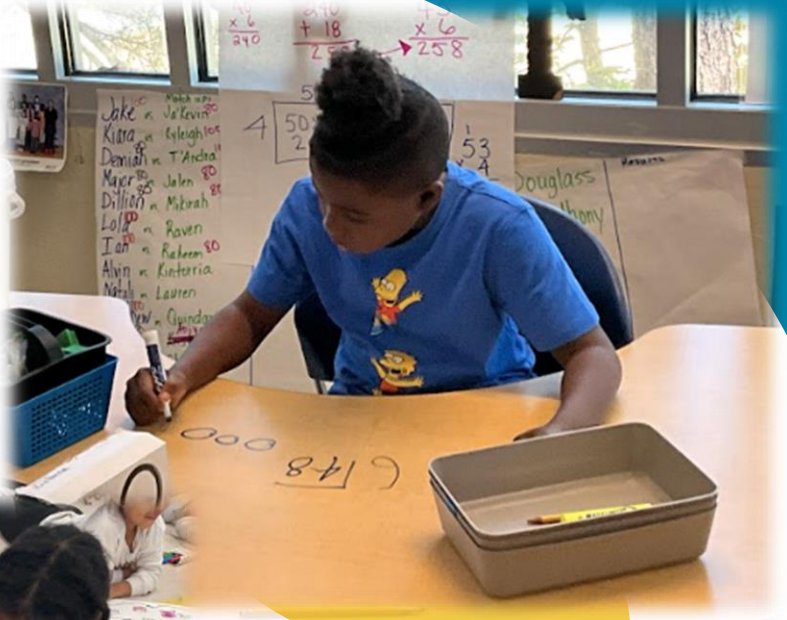
FAMILY  
ENGAGEMENT  
EVENTS

The Grinch  
Musical

Parent  
Conferences  
(APTT)



# Cluster Advisory Report





# Cluster Advisory 12/5/23, 5:00 PM



## Cluster Advisory Report

Cluster Plan Updates

School Updates



## District Updates

Calendar

APS Connects

**Thank you**